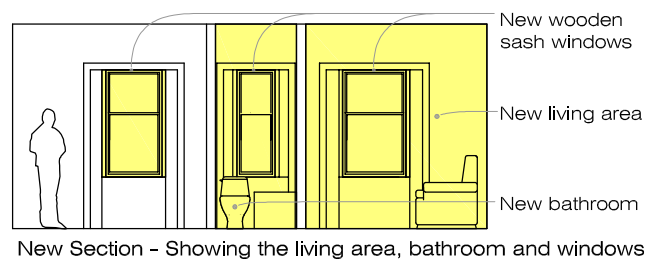
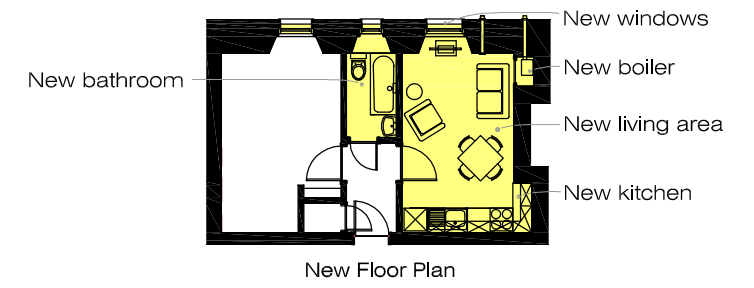
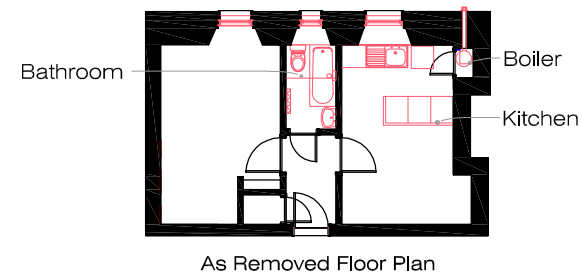
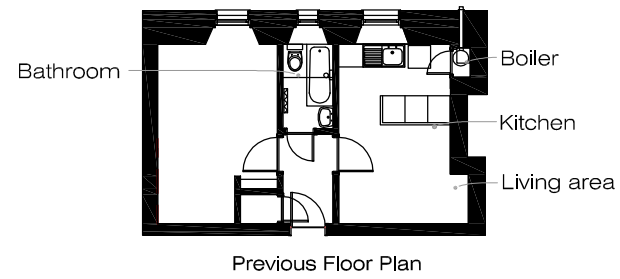


# KINGHORN PLACE, EDINBURGH

## Remodelling of living area and bathroom



This is a small Victorian one bedroom tenement flat. The challenge on this project was to improve the living space and provide a new bathroom. The previous kitchen was located to the front of the living area with the lounge to the rear which was not ideal as it was far away from the room's natural light. The solution was to relocate the kitchen to the wider recesses at the back of the living area leaving the lighter front of the room free for the lounge and dining areas. We were initially engaged by the client to redesign the property's layout and attain the required building warrant consent. Our involvement was then extended to deal with the specification and procurement of the kitchen and bathroom, manage the tender process and oversee the construction period acting as the Contract Administrator.