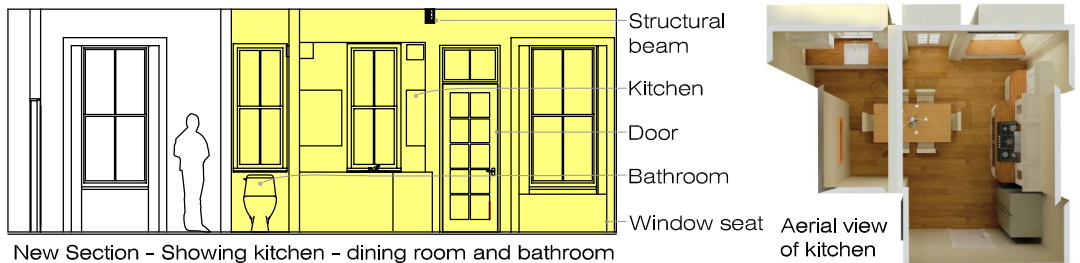
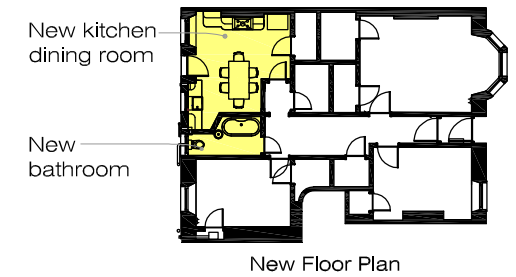
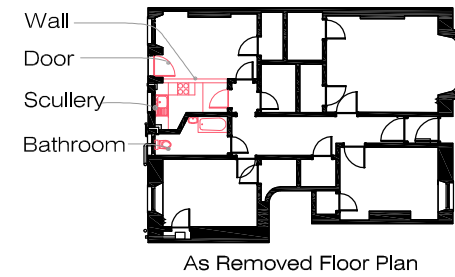
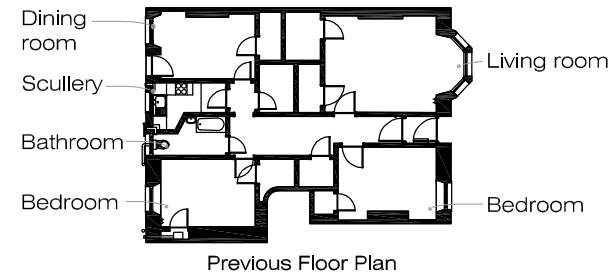


GLADSTONE PLACE, EDINBURGH

Alterations for a grade C listed apartment



This is a large two bedroom ground floor flat built in 1890 located opposite Leith Links with a grade C listed status. The original kitchen facilities took the form of a small scullery. The client wished to create a kitchen-dining room that was in keeping with the character and proportion of the property and improve the bathroom. The original dividing wall was removed between the scullery and the dining room and supported with a structural beam. This brought together two large existing windows and a new glass panelled traditional back door to create a distinctive and impressive space overlooking it's private garden. Listed building consent and building warrant consent was secured and the kitchen and bathroom was fully developed and specified before it was sent out for tender to the selected contractors.